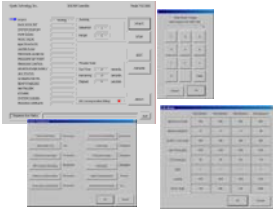


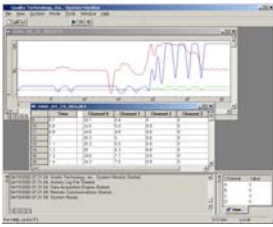
PlasmaTherm SL700 Series Control System Retrofit

Qualtx Technology designed a retrofit control system for the PlasmaTherm SL700 series process tool. The retrofit replaces the deteriorating control system by replacing it with a modern control system that takes advantage of the latest Windows 2000 features. The complete retrofit includes industrial controller, VGA monitor, keyboard, light pen, control system hardware and software, source code, and on-site installation.



Veeco Microetch ION Mill Control System Retrofit

Qualtx Technology designed a retrofit for the Veeco ION Mill controller. The retrofit was engineered as a drop-in replacement for the original equipment. The software uses the same screen layout as the existing Microetch controller so that operators do not need to learn how to operate the new system. Qualtx has also designed an AVC-1000 replacement that works with both the original Veeco controller and new Qualtx controller.



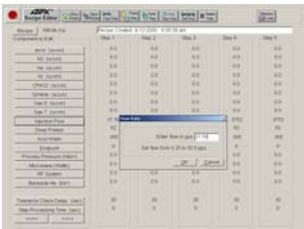
System Monitor – Data Monitoring and Analysis with Alarms

Qualtx Technology designed a system to capture key information related to system process performance in real-time. Each signal has an alarm level and an associated action for the alarm thereby allowing control based on the state of the monitored signal. System Monitor provides advanced data acquisition, monitoring, analysis, and display capabilities. It connects to virtually any peripheral through direct I/O interface.



Legacy System Automation with Touch Screen Interface

A fab in Dallas contracted with Qualtx Technology to provide automation to a manual process system. A micro-controller was used for analog and digital control and a touch screen was provided as a means for user interface.



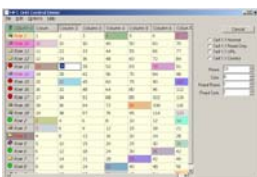
Software Addition for a Process Equipment OEM

An equipment OEM in MA contracted with Qualtx Technology to provide additional software functionality to their system's recipe editor. A software specification was written and agreed upon by the two companies. The software addition was then developed by Qualtx to the specification. The software was delivered on-budget and ahead of schedule.



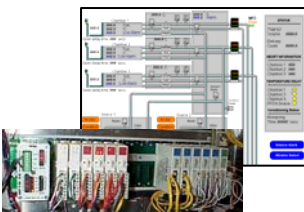
Replace Windows 3.1 Software with Windows 2000 and LabVIEW

A fab in Idaho contracted with Qualtx Technology to retrofit their ECR control system. The retrofit task was defined in a specification document developed by both companies. The new control system takes advantage of National Instruments LabVIEW graphical programming language and allows the customer to easily make changes to the control system software.



Designed a new recipe editor for an end user's process tool

Qualtx Technology developed a recipe editor for a fab in Dallas to use on several process tools. The customer needed more features and a different layout for editing recipes from what the OEM had provided. Qualtx was given a file format and user interface guidelines.



Finished software development for an Equipment OEM

An equipment OEM in Dallas contracted with Qualtx Technology to complete its control system software after the company found itself with no software development resources. Qualtx was able to finish the software and work with the end-user to add enhanced features to the software. The OEM was happy with the end result and the fact that Qualtx could work with its existing code rather than trying to re-engineer the entire system.